

Argos, Indiana Five Year Park and Recreation Master Plan 2016- 2020

A comprehensive Master Plan by the Argos
Park Board and the Argos Parks
Department

Argos Parks Department
201 W. Walnut Street
Argos, IN 46501
(574) 892- 5717
E-mail: electric@townofargos.com
Website: www.townofargos.com

**CERTIFICATE OF RESOLUTION
ARGOS PARKS & RECREATION
DEPARTMENT**

WHEREAS, the Argos Parks and Recreation Board ("the Board") is sensitive to the parks and recreational needs of the residents of Argos, Indiana, and

WHEREAS, the Board realizes the importance of sound planning in order to adequately satisfy the needs of its citizenship,

NOW, THEREFORE, be it resolved that the Argos Parks and Recreation Board, by unanimous decision, does formally adopt the Argos Parks and Recreation Master Plan as its official plan for the next five years, for the growth and development of park and recreational opportunities in Argos, Indiana.

Passed and signed this day of January 2016.

Edward Barcus, President

Jon VanDerWeele

Phil Dean

Joe Stone

Nicole Stevens

PARK AND RECREATION BOARD

Edward Barcus, President - 2016

111 Dianne Ave.
Argos, IN 46501
(574) 892-9289
ebarcus@fourway.net

Jon VanDerWeele, Vice President - 2018

20227 Kenilworth Rd.
Argos, IN 46501
(574) 892-5540

Phil Dean, Secretary - School Board Appointment

218 N. Maple St.
Argos, IN 4501
(574) 892-9905

Joe Stone, Member - 2019

140 E. Walnut Street
Argos, IN 46501
(574) 892-6293

Nicole Stevens, Member - 2017

653 Freedom St.
Argos, IN 46501
(574) 276-6229

Jim Burroughs, Park Supervisor

201 W. Walnut St.
Argos, IN 46501
(574) 281-2216

Donna Burroughs, Plan Author

120 Westview Ct.
Argos, IN 46501
(574)-780-3388
dburroughs@triton.k12.in.us

Table of Contents

Board Resolution Adopting Plan.....	2
Introduction.....	5
Definition of the Planning Area.....	6
The Park Board/ Department.....	6
Argos Park Department Budget.....	8
Goals of the Plan.....	11
Natural Features and Landscapes.....	11
Man-made, Historical, and Cultural.....	12
Social and Economic Factors (From the 2010 US Census).....	12
Accessibility and Universal Design.....	13
Public Participation.....	13
Needs Analysis.....	17
Priorities and Action Schedule.....	18
Appendices.....	21
Argos Regional Map	
Facilities Location Map	
Section 504 Compliance Form	
2015 Argos Parks Public Survey	
Newspaper Notices, Articles, and Meeting information	
Facility Inventory Forms	
2010 Census information	

Introduction

The Argos, Indiana Parks and Recreation Five Year Master Plan has been created to continue the major plan outlined in the Ball State University complete study of the Argos park lands which was completed in the early 1990s. This current five year plan is designed to cover the calendar years 2016-2020. It is the goal of the Argos Parks and Recreation Board to maintain and continue the development of the Argos park lands so that high quality recreational activities are available for the citizens of all ages in the Argos Community.

Master Plan Process

A master plan should serve as a "guide" in providing recreation in the community. The planning process for the update offered insight to the needs, trends, and changing events. There was a strong emphasis focused on public input. There was a work session conducted with Park Board members and residents. Also, in addition to a public meeting, time was allotted during a regular Park Board meeting to review the master plan and receive comments. Finally, a survey was distributed to the populace, the results of which were invaluable to the process. A separate survey was completed electronically by all students at Argos Schools in grades 4-12. All of these items served as the framework for the development of this action plan.

Through this hands-on approach to master planning the following accomplishments were made:

- Evaluation of current park and recreation system effectiveness.
- Identification of recreational facilities that are needed.
- Prioritization for improvements and changes.
- Establishment of an action plan that outlines the proposed implementation and costs.

The following analysis and master plan prepared by the Argos Park Board provides the general location, size, and facility requirements for development for the next five years. As specific programs are implemented over the next several years, the long-range general plan should be updated and a new five-year program developed.

Issues

The key to any park and recreation master plan is the identification of issues. If the issues facing a park board can be identified and defined, then they can be prioritized in an orderly manner. The process used in the development of the Argos Park and Recreation Master Plan attempted to reach as many residents as possible to identify a consensus on the issues. Citizen input is the core of this master plan. It is a

compilation of the feelings, wants, desires, and needs of those residents. It is the involvement of residents and citizens that makes a master plan legitimate and not a shelf study.

Methods to collect input and identify issues were:

- Public meetings
- Park Board meetings
- Public surveys
- Surveys of students at school
- Site visits

Key Issues Identified include:

- Park security
- Budget constraints
- Development of "inclusive" recreational facilities
- Staffing
- Additional activities/ facilities needed
- Continuing to develop the "town within a park" concept by adding trails

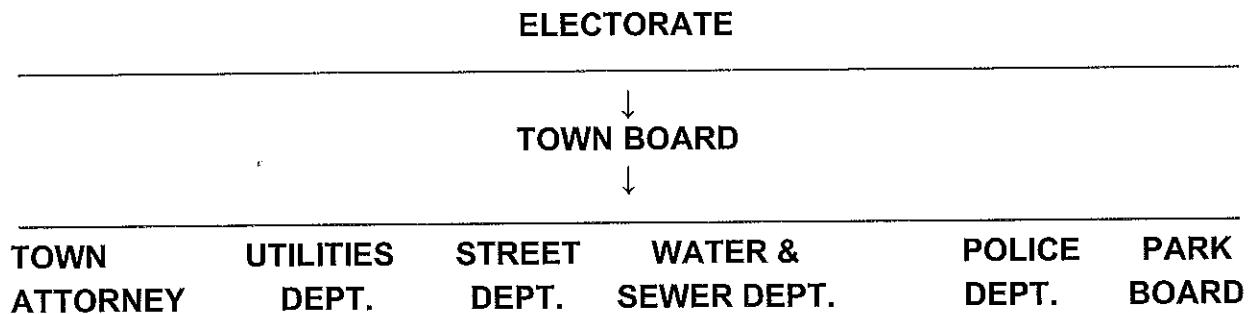
Definition of the Planning Area

The planning area for the Argos Parks and Recreation Department is the same as the service area. The service area for the Town of Argos does not stop at the town limits, but includes a two mile zone extending beyond the town limits. Past public input and user surveys have indicated that Argos has a significant and important rural user population, even if those users do not contribute directly to the taxes gathered from the town residents to support recreational park lands and activities. Argos Parks and Recreation Department remains committed to making local services and facilities available to anyone and everyone, regardless of resident status, ability to pay, or physical/mental ability.

The Park Board / Department

The park board was first created in 1980. Thirty-four acres of land were purchased at that time, but no further action was taken and the Park Board became inactive. The Park Board was re-established in 1996. Four members of the Park Board are subject to appointment by the Town Council. The appointments are four year terms in staggered succession so two terms will not expire in the same year. There shall be no more than two of one political party serving under appointment. The other voting member is a representative selected by the local school board.

GOVERNMENT STRUCTURE FOR ARGOS



Park Board Function

The primary function of the Park Board is to establish policies and objectives for effective administration and implementation of the park recreation projects, activities, and programs. In addition, it is the responsibility of the Argos Parks and Recreation Board within the framework of the Indiana Park and Recreation Law (I.C. 36-10-3) to:

- Inform the public and town administration about the significance and needs for open space, facilities and programs.
- Provide liaison between other community agencies to ensure coordination with and support from these agencies.
- Encourage citizen involvement and support through various community and private organizations.
- Secure adequate budgetary support.
- Authorize payment of bills and claims.

Duties of the Park Board

The duties of the Argos Parks and Recreation Board as outlined by Indiana Code 36-10-3 include:

- Establish rules governing the use of park and recreation facilities by the public.
- Provide police protection for its property and activities, either by requesting assistance from the state, municipal, or county police authorities; or by having specified employees deputized who, however, are not eligible for police pension benefits or other emoluments of police officers.
- Appoint the necessary administrative officers of the department and fix their duties.
- Make recommendations and an annual report to the executive and fiscal body of the unit concerning the operation of the board and the status of the park and recreation programs in the district.
- Prepare and submit an annual budget in the same manner as other executive departments of the unit.

- Appoint at least one member to serve on another kind of board or commission, whenever allowed by statute.

Park Budget

The financial status of the Town of Argos and the Parks and Recreation Department is equally important in determining the park and recreation plan, as is Argos' natural features and recreation facilities. The past history of the Parks and Recreation Department budgets, amount of indebtedness, sources of revenue other than council appropriations and the general city attitude toward funding and expanding facilities, all add important information to the master plan process. It is essential that an action plan be established that recognizes financial constraints of the Town and the Parks and Recreation Department. Every proposal made should have a reasonable source of method of funding to turn it into a reality. The majority of the Park and Recreation Department's revenue comes from the Town Council appropriations, which are based on the annual June and December property tax payments. The budget for the park department has been cut each of the last several years. This makes it difficult to maintain current facilities, let alone develop new ones.

The Argos Parks and Recreation Department budget consists of four categories, as prescribed by the State Board of Accounts: 1.) Personal Services, 2.) Supplies, 3.) Other Services, and 4.) Capital Outlays. A brief description of each and an overview of the funding trend in the past years is as follows:

Personal Services - Monies within this category cover all salaries and wages of full time, part time and seasonal employees, as well as insurance, retirement and social security benefits.

Supplies - This classification covers commodities which, after use, are either entirely consumed or show a definite impairment or depreciation after a short period of use.

Other Services and Charges - This category cover services performed for the department by others (non- employees). It also includes the use of equipment and furnishing of materials.

Capital Outlays - Monies within the category cover the cost of capital items relating to land, buildings and equipment.

Details of the Argos Parks and Recreation Department budgets for 2016 through 2020 are provided in the Appendices..

For the year 2016 , the fund amount for each park budget category is as follows:
Personal Services = \$59,350

Supplies = \$10,500

Other Services and Charges = \$17,500

Capital Outlay = \$25,000

Total Budget for 2016 = \$112,350

Parks and Facilities

The town lands which are currently being utilized for park and recreation purposes include: Argos Community Park, Argos Memorial Park, the Pond Park and the Yearick park area. These facilities represent the extent of town-owned park facilities located within the Town of Argos jurisdictional area.

Argos Community Park

The main park contains 50.84 acres incorporating a wide variety of active recreational facilities including baseball diamonds, soccer fields, a basketball court, a sledding hill, a splash pad, and playgrounds, as well as passive recreational facilities such as picnic areas, pavilions, a fishing pond, and nature trails. This community park is the focal point of public recreation in the town.

Argos Memorial Park (Previously VanVactor Park)

Argos Memorial Park is approximately 1.5 acres in size. The southeast corner is currently used as a play area for community children. Several pieces of playground equipment are located on the property, as well as a park shelter. Use of this park facility has been limited due to the fact that for many years portions of this park land served as a cemetery. Any expansion of this property as a park and recreation area will require the resolution of the legal issue concerning its one-time use as a cemetery.

Yearick Neighborhood Park

This property consists of 3.38 acres currently used as green space and a softball field utilized by a local youth softball league and Argos High School. The softball field will be adding lights in the spring of 2016.

Public Tennis Courts

The two tennis courts are located next to Argos High School. The tennis courts are open to the public and are also owned/utilized by Argos High School. Development and maintenance of this facility is a joint venture between the Argos Town Board and the Argos School Board. Although open to the public, the school has priority during the school year regarding the use of the tennis courts.

Argos Community Schools

The town's school site, identified on the accompanying maps and inventory matrix, provide an important supplement to the facilities and areas provided by the Park and Recreation Department. Historically and currently, there is a good relationship between Argos Community Schools and Argos Parks and Recreation Department. Facilities of each entity are shared by each other to meet their recreational needs. Situated on school property are one unlighted baseball diamond and one lighted soccer field. The baseball diamond and soccer field are fenced in and not available for public use.

Pond Park -(West Side Ponds)

This parcel features 11 acres of green space with potential for a pavilion, walk trails, "picnic" type recreation, and expansion of a fishing area presently used by local residents.

Maintenance

In many instances, Argos' Parks and Recreation Department image is developed on how well parks and facilities are maintained. The Argos Parks and Recreation Department is fortunate to have a beautiful park and a maintenance staff dedicated to their work.

Current Maintenance Facility

Constructed in 2001/2002.

Facility is a block building, 24'x 32'.

Current Park Maintenance Procedures

Maintenance reviews conducted on daily site visits.

Trash pick up in all parks.

Grass mowing all parks.

Current Park Maintenance Staff Include

(1) Part Time Maintenance Laborer

(1) Full Time Maintenance Laborer

(1) Full time Utilities Superintendent / Park Supervisor

Current Maintenance Equipment Includes:

22HP John Deere lawn tractor with mower and bucket

651-IP New Holland tractor with 15' bat-wing mower

27HP Toro zero turn diesel mower with 72" deck and bagger

27HP Toro zero turn diesel mower with 60" deck

6' X 12' trailer

2002 Dodge Ram 1/2-ton pickup

Hand mowers, edger, trimmers, etc.

Goals of the Plan

After gathering input and holding discussions, the Argos Parks and Recreation Department and the Park Board have agreed on the following goals for this five year parks and recreation plan.

- Submit the master plan to the Indiana Department of Natural Resources Division of Outdoor Recreation, adhering to the required timeframe for submission.
- Receive approval from the Indiana Department of Natural Resources for eligibility for application for grant programs.
- Use this plan as a springboard to apply for all applicable grants.
- Continue to develop the concept of a "town with a park".
- Construct walkways/ trails linking all park areas within the town
- Construct "inclusive" recreational facilities
- Install a security system for the parks.
- Continue to add recreational activities/ facilities in all park areas

Natural Features and Landscapes

Argos lies in Marshall County, which lies in the Steuben Morainal Lake Section of the Northern Moraine and Lake physiographic region of Indiana. The surface of the county is that of a glacial plain broken by the valleys of the Yellow and Tippecanoe Rivers and their tributaries. The Town of Argos is basically flat.

The town has tree-lined streets and maple, oak, poplar, walnut, and ash trees throughout. The soil in the area is conducive to farming and some areas have a great deal of clay. The soil does not present any barriers to construction projects.

Currently a wetlands area exists within the existing Argos Community Park. The wetlands has a trail within it. Within the next five years we plan to continue development of the existing walk trails and/ or establish additional walk trails.

Man-Made, Historical, and Cultural

Several man-made, historical, and cultural features occur in Argos that have an impact on the Parks and Recreation Department.

A man-made pond was created when the US 31 overpass over the Penn-Central Railroad was constructed. The parcel of land with the pond is currently owned and maintained by the Park Board. Currently a wetlands area exists within the existing Argos Community Park. This wetlands area features an observation deck and a surrounding nature trail.

Transportation divides the town geographically. A railroad runs east/west through the south end of town near the industrial park. State Highway 31 runs north/south through the town and the State Highway 31 Bypass runs north/south on the west side of town.

Most of the social events in town are through the parks department, the churches, or the fire department. The churches host special meals and musical events. The fire department sponsors fish fries and "movie in the park" nights. The park has hosted a small Fourth of July celebration for several years. A special committee of townspeople was formed and is in the process of planning a large Summer Kick-Off Festival for June of 2016.

Social and Economic Factors

(From the 2010 US Census)

According to the 2010 Census, Argos has 1691 residents. There are 3856 residents if the rural area two miles around the town is included. The Argos population is made up as follows:

- 50.2% male, 49.8% female
- Median age = 33.1 years
- 96.7% White; .6% Black; 1.7% American Indian; .6% Asian;
- 4.6% are native Spanish speaking
- Average household size = 2.63 individuals
- 88.7% of houses are occupied; 11.3 % of houses are vacant
- Median House value = \$80,503 compared to \$122,200 for Indiana
- Median income = \$41,481 compared to \$47,529 in Indiana
- Per Capita income = \$18,503
- 14.5% of individuals live below the poverty level
- 87.5% of the individuals have at least a high school diploma.
- 46.4% of families are husband/wife households
- 5.3% are male households with no wife
- 17.3% are female households with no husband
- 37.1% of households have individuals under the age of 18
- 23.5% of households have individuals over the age of 65

The implication of this data is that financial accessibility will need to be considered when planning park activities for the citizens of Argos. The lower per capita income will also have to be considered when considering bonds or additional taxes to fund projects.

Accessibility and Universal Design

To comply with the requirements of the 1990 Americans with Disabilities Act the Town of Argos reviewed their policies and facilities for ADA compliance. Since the Town of Argos has fewer than fifty employees, no formal compliance officer is required, but the Park Supervisor and Utilities Superintendent serves in this capacity. The following items were found to be present as required for this law:

- Park rules and Regulations
- Facility Use and Rental Requirements
- Recreation Programs and Activities
- Park facilities (picnic tables, walkways, shelters, concession stand, fishing pier)
- Parking and Restrooms

The areas to be addressed for ADA compliance going into the future include:

- Playgrounds
- Printed materials (need to be available in Braille,too)

Public Participation

The Argos Parks and Recreation Board values public input, even though it is very difficult to obtain it. Public meetings were held in October and November, but only the board was present in October and only one community member attended in November. (Minutes of those meetings are included in this document.)

Surveys were made available online at the town's website. Physical copies of the survey were placed in the town clerk's office and the public library. Many surveys were picked up, but none were returned. A focus group was held with the town employees and their input was gathered on the survey that is included in this document. The most public input came from the electronic survey that was sent to the students at the school. More than 100 surveys were completed and tallied online by all students in grades 4-12. The results of that online survey are included. The completed plan was placed on the town website for public input and also available in hard copies in the clerk's office, at the school, and in the library for feedback during the public comments phase of adoption of the plan. Comment sheets and phone contact information was also available for feedback. Patrons had three weeks to provide their feedback in this plan development after the draft of the plan was completed.

**Argos Parks and Recreation Department
2015 Park Plan Development Survey**

Please complete and return to : Argos Park Board, 201 W. Walnut St., Argos, IN
46501

PARK USE

1. How often do you use the Argos Parks?
Every Day 4 or 5 times a week 3 or fewer times a month once or twice a year never
2. How would you rate our parks?
High quality generally good quality varies from park to park poor quality
3. What do you typically do in the parks?
Use playgrounds walk/jog/run go fishing relax use sports fields picnic other
4. Please select the people that you most often use the park with:
Family friends varies on each visit just myself

PROGRAMS AND ACTIVITIES

1. What ideas do you have for programs in the park?
2. What programs in the park have you attended?
July 4th-a-Bration Movie in the Park Athletic events
3. Were the programs fun and well organized?
Yes A little no

PARTICIPATION

1. Is there anything that prevents or restricts your use of the parks?
No Don't use parks Yes : If so, what? _____
2. Do any of these physical barriers restrict or prevent your using the parks or programs?
Physical access to park/equipment lack of accessible parking park is too far away
Other: _____
3. What is the single most important thing that prevents you from using the parks or programs more?
Lack of time poor health/mobility lack of interest other

4. I would like to see the Argos Park Board add the following things (check all that apply):

More accessible play equipment benches/shelters more walking trails/paths more
 More youth programs/activities What? _____
 More adult programs/ activities What? _____
 New, large amenity like a skatepark or dog park

PARK FUNDING

1. **Would you like Argos to invest more money in the parks?**
 Yes No Maybe Depends on the investment don't use parks
2. **How would you like Argos to pay for new amenities in the parks?**
 Use existing budget municipal bonds new taxes/fees
 donations
 Grants all of the above
3. **Are you willing to pay new taxes or user fees to help pay for park improvements?**
 Yes maybe no depends on the improvements
4. **Are you willing to pay for new park improvements with any of the following methods? (check all that apply)**
 Yes, small increase in program fees yes, small increase in shelter reservations
 Yes, small yearly city park user tax No, can't afford to pay anything for parks
 No, unwilling to pay anything for parks

**ARGOS PARKS AND RECREATION BOARD
PUBLIC MEETING
FOR COMMENTS ON FIVE YEAR PLAN**

**November 19, 2015
6:30-7:30 P.M.**

There were four members of the Argos Community in attendance at the public meeting convened for patrons to give input on the five year parks and recreation plan. Those in attendance were: Brenda Hutchinson, Ed Barcus, Jim Burroughs, and Donna Burroughs.

Those present had a discussion until 7:30 P.M. about projects the school, town, and park boards could complete through collaboration which would save tax dollars for all three entities. Some of the suggestions were repairing the tennis courts near the school for use by all three groups and adding cost efficient lights at the softball field near the school. These are current facilities that need repairs but would be useable if updated.

Also discussed was the idea that improved recreational facilities would make the community more attractive for businesses/industry and possibly motivate people considering a change of residence to move to Argos. The town must look at ways to market the Argos Community for the community to remain viable into the future.

The idea of connecting the multiple town park areas with trails was also met with favor by the group in attendance. Adding signage throughout the town which promoted and guided visitors to the town park attractions was also supported by the discussion group. Lastly, an enclosed building that could be rented for reunions, weddings, large group celebrations was also mentioned as an attraction to consider for the park plan.

Respectfully Submitted,

Donna J Burroughs

**Donna Burroughs
120 Westview Ct.
Argos, IN 4650**

Needs Analysis

Progress Evaluation

The Argos Parks and Recreation Department has made considerable progress during the previous five years. Accomplishments were as follows:

Clarified/ formalized facility use policies and guidelines for various community groups that regularly utilize Park facilities.

Established preventive maintenance program for facilities.

Established regular cleaning schedule for equipment (especially mowers).

Projects Completed

Argos Community Park

Constructed a splash pad through a grant from the local community foundation and donations from local individuals and businesses.

Constructed an entrance to the park from State Road 10 on the south side of the park so that residents can now drive all the way through the park.

Added parking areas for the disabled

Added outdoor exercise equipment

Added a toddler playground

Added a basketball court

Added signs and landscaping at new entrance on south side of the park

Added a sledding hill and a fishing pond/piers

Added eight park benches

Argos Memorial Park -

Re-roofed a pavilion

Removed a tree struck/ruined by lightning

Yearick Neighborhood Park -

Added lights to the softball field donated by the school from their soccer field
(These lights will be hooked up and running in Spring 2016)

Added new fence, dugouts, concession stand

Pond Park - None

Projects in Progress

Argos Community Park

- Installing a horseshoe pit.
- Installing a sand volleyball area.
- Adding eight park benches.
- Investigation of viability of additional small playground area closer to the baseball and soccer fields.

Argos Memorial Park - None

Yearick Neighborhood Park

- Hook-up of field lights

Pond Park - None

Priorities and Action Schedule

The top issues were broken down into components and placed in the five year action plan or the priority listings for implementation. Below are the priority listings for the Argos Park and Recreation Board. These are priorities that have been identified to be accomplished and implemented as an on-going basis.

Park Board Priorities

- Expand and improve parks, facilities and recreational opportunities for the community.
- Maintain park security.
- Begin construction of trails and signage

Maintenance Priorities

- Replace aging equipment.

General Park Priorities

The concept of "A Town within a Park" is the ultimate goal of the Argos Park Board. The Parks would be integrated by a system of interconnected pedestrian trails between all park areas within the Town. These walking trails would incorporate landscaping, benches, and trail signage.

LONG RANGE PRIORITIES

Several issues were identified which may not be feasible to be accomplished during the next five year master plan period. Even though the following issues may not be implemented within five years, they are listed here to help provide long-term direction.

These were important issues to the residents and are documented so they will not be lost and forgotten.

Argos Community Park (mainly centered on new parcel)

- New playground area.

- Create amphitheater

- Build a warming shelter at the base of the sledding hill..

- Enhancement of existing walk trail

- Add more benches and picnic tables made from recycled materials.

- Install playground equipment for older children and the disabled

Action Plan

In order to accomplish the goals outlined previously, funding will be paramount. Limitations on the Town of Argos to fund the variety of programs and facilities needed by the public sector represent an ongoing challenge. Overcoming these limitations and constraints requires the utilization of various funding sources. Below is a brief description of the principal resources available to the Argos Parks and Recreation Department for implementing programs and developing facilities for recreational purposes within the Town of Argos.

Park Budget - Annual tax allocations from the general Town tax levy which can be utilized for staffing and financing capital improvements. However, general tax dollars may not be available for extensive capital improvements. The park budget has been reduced every year the last five years.

Special Tag Appropriations - The Town may also, from time to time, appropriate money toward individual Park Department projects and improvements from other Town revenue sources. They did this in 2015 with the installation of the Splash pad.

Gifts and Donations - Donations of money, land, and time are an important resource to any park and recreation board. Donations are critical in that they can be used to match grants from other sources.

General Obligation Bonds - General obligation bonds, which are retired by tax money, provide a funding source for implementation of large-scale projects. The Argos Parks and Recreation Board's bonding power cannot be in excess of two (2%) percent of the assessed valuation of the taxing district. Public hearings must be held, and approval is required by both the Town Council and Indiana State Board of Accounts.

Land and Water Conservation Fund - Administered by the Indiana Department of Natural Resources, Division of Outdoor Recreation, these funds are the most predominantly used monies for park development of outdoor recreation facilities. These grant funds can be utilized to finance up to 50% of the cost of eligible projects. To qualify for the funds, a town must have a park and recreation board established in accordance with state statutes and an approved Park and Recreation Master Plan.

Recreational Trails Program - A special Indiana grant program with the goal of having every Hoosier within fifteen minutes of a walking/biking trail

PRIORITY ACTION PLAN

YEAR	SITE	ACTION	COST ESTIMATE	POTENTIAL SOURCE OF FUNDS
2016	ALL	Adopt Master Plan	\$1,500	Operating Budget
2016	Yearick	Softball Lights	\$1,000	Operating Budget
2016	Community Park	Sandpit Volleyball & Horseshoes	\$800	Operating Budget
2016	Community Park	Security cameras/WIFI	\$15,000	Operating Budget/Donations
2016	Memorial Park	Horseshoes	\$300	Operating Budget
2017	ALL	ADA COMPLIANCE	\$5,000	Operating Budget
2017	Memorial Park	Repair Playground & Install Drinking Fountain	\$3,500	Operating Budget
2017	Yearick	Resurface Tennis Courts	\$5,000	Operating Budget
2017	Community Park	Disc/Frisbee Golf	\$8,000	Community Foundation Grant
2018	Pond Park	Install 2 Fishing Piers	\$10,000	Operating Budget, LWCF
2018-2020	ALL	Create Trail System Through All Parks	\$80,000	RTP, Operating Budget

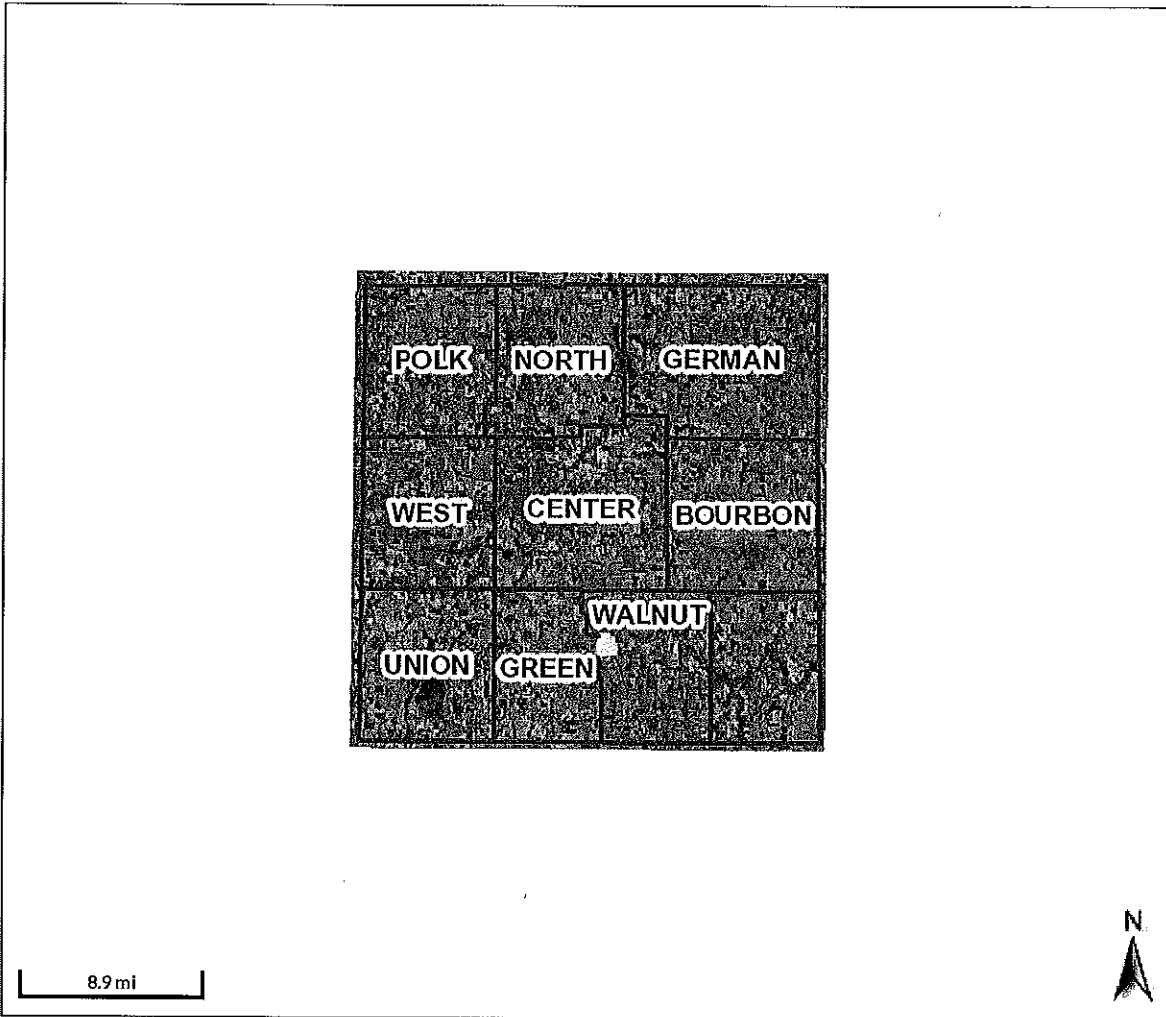
2018-2020	ALL	Add Signage Throughout	\$5,000	RTP, Operating Budget
-----------	-----	------------------------	---------	-----------------------

Appendices

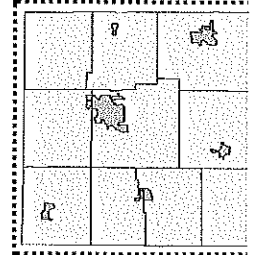
Planning Area - The enclosed map shows the township boundaries of Marshall County and includes Argos in Walnut Township.. While current town residents provide the bulk of the financial resources, the park system has a service area substantially beyond the corporate limits. A significant portion of park users live outside the town limits.

Population/Economic Profile - Population characteristics of residents act as indicators of potential recreational needs and desires. Annual income, age groupings, number and size of households, employment, and educational attainment are socioeconomic characteristics that influence the amount of leisure time individuals are apt to have and the recreational activities they may desire. The majority of Argos residents are engaged in agricultural and industrial vocations. Laborers regularly commute to bordering counties for employment opportunities. The rate of future growth will impact the adequacy of existing facilities and the need to acquire/ develop new facilities.


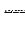
In-depth demographic information is contained in the following reports obtained from the U.S. Census Bureau, Plymouth Chamber of Commerce, and Indiana Business Research Center.



Overview



Legend

-  Township Boundaries
-  Road Centerlines
-  Road RoW


Parcel ID 502220999993999016
 Sec/Twp/Rng n/a
 Property Address
 District n/a
 Brief Tax Description n/a

Alternate ID n/a
 Class n/a
 Acreage n/a

Owner Address n/a

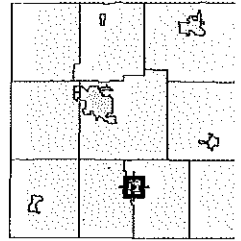
(Note: Not to be used on legal documents)

Date created: 12/15/2015
 Last Data Upload: 12/15/2015 2:36:02 AM

 Developed by
 The Schneider Corporation



Overview



Legend

- Corp Line
- Parcel Search
- Parcel Lines
- Township Boundaries
- Road Centerlines
- Road RoW

Date created: 12/12/2015
 Last Data Upload: 12/12/2015 1:31:43 AM

Developed by
 The Schneider Corporation

1 = Community Park
 2 = Pond Park
 3 = Memorial Park
 4 = Yearick Park

U.S. 31 HIGHWAY

ELEV FOREST PRODUCTS

16TH ROAD

LOT 8 LOT 7 LOT 6 LOT 5 LOT 4 LOT 3 LOT 2 LOT 1
COLONIAL ESTATES SUB., SECTION 2

ARGOS COMMUNITY PARK

MASTER SITE PLAN

MCDONALD'S/AMDCO



NORTH
1" = 60'-0"

STATE ROAD 10

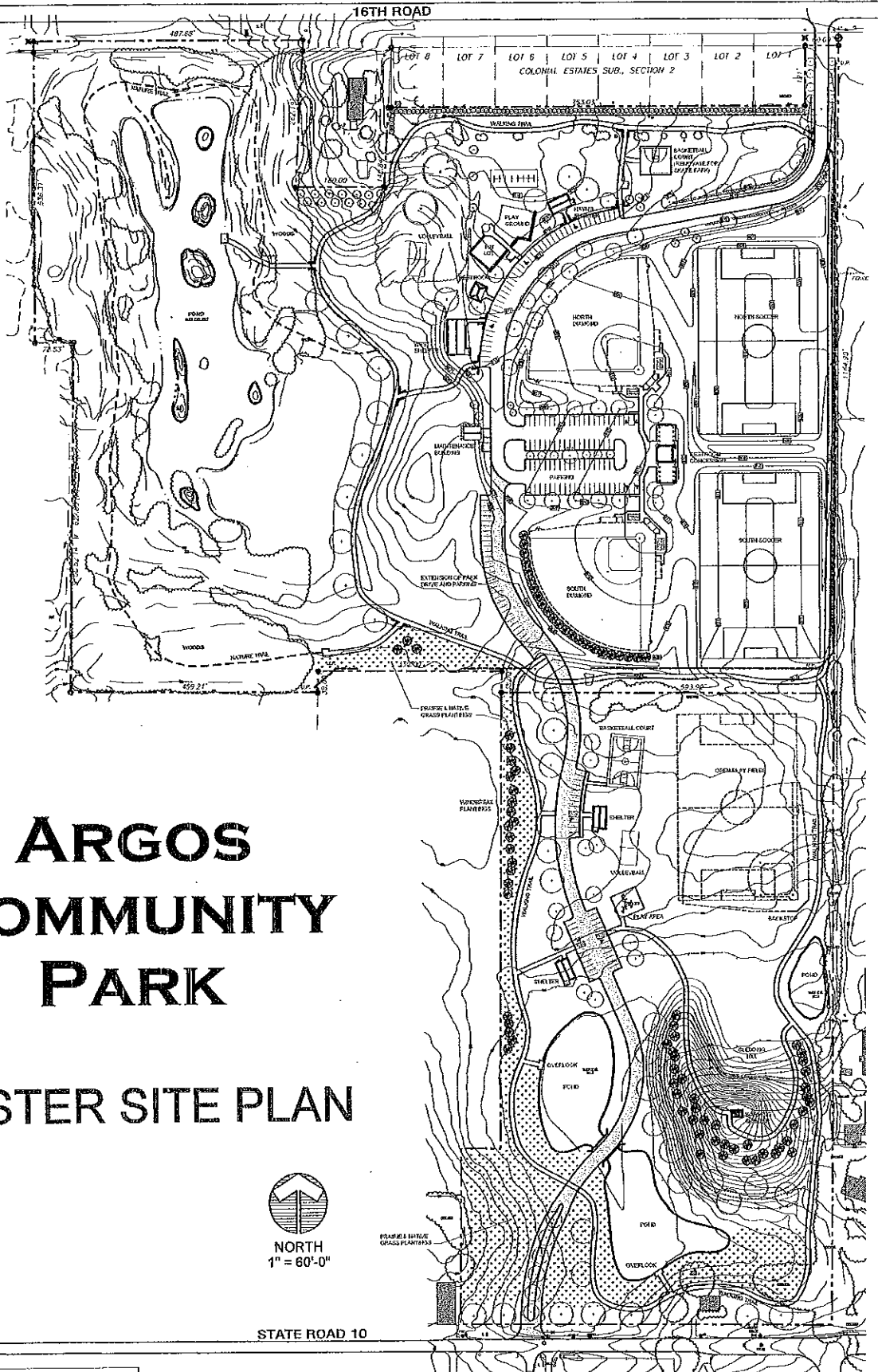
SiteScapes INC.

LANDSCAPE ARCHITECTURE AND PLANNING
 1818 NORTH MAIN STREET LUSHANAPOLIS, INDIANA 46545
 TELEPHONE (774) 265-4917 FAX (774) 255-4018
 WWW.SITESCAPES-INC.COM

APRIL 10, 2007

ARGOS PARKS AND RECREATION BOARD

201 W. Walnut Street • Argos, Indiana 46501



**ASSURANCE OF ACCESSIBILITY COMPLIANCE WITH:
ARCHITECTURAL BARRIERS ACT of 1968 (As Amended);
SECTION 504 OF THE REHABILITATION ACT OF 1973 (As
Amended);
AND TITLE II OF THE AMERICANS WITH DISABILITIES ACT
OF 1990 (As Amended)**

The Town of Argos Parks and Recreation Board has read the guidelines for compliance with the Architectural Barriers Act of 1968 (As Amended); Section 504 of the Rehabilitation Act of 1973 (As Amended); and Title II of the Americans with Disabilities Act of 1990 (As Amended) and will comply with the applicable requirements of these Acts.

SIGNATURE _____
APPLICANT PRESIDENT

PRINTED NAME

SIGNATURE _____
APPLICANT SECRETARY

PRINTED NAME

DATE

**Argos Parks and Recreation Department
2015 Park Plan Development Survey**

Please complete and return to : Argos Park Board, 201 W. Walnut St., Argos, IN 46501

PARK USE

1. How often do you use the Argos Parks?
Every Day 4 or 5 times a week 3 or fewer times a month once or twice a year never
2. How would you rate our parks?
High quality generally good quality varies from park to park poor quality
3. What do you typically do in the parks?
Use playgrounds walk/jog/run go fishing relax use sports fields picnic other
4. Please select the people that you most often use the park with:
Family friends varies on each visit just myself

PROGRAMS AND ACTIVITIES

1. What ideas do you have for programs in the park?
2. What programs in the park have you attended?
July 4th-a-Bration Movie in the Park Athletic events
3. Were the programs fun and well organized?
Yes A little no

PARTICIPATION

1. Is there anything that prevents or restricts your use of the parks?
No Don't use parks Yes : If so, what? _____
2. Do any of these physical barriers restrict or prevent your using the parks or programs?
Physical access to park/equipment lack of accessible parking park is too far away
Other: _____
3. What is the single most important thing that prevents you from using the parks or programs more?
Lack of time poor health/mobility lack of interest other _____
4. I would like to see the Argos Park Board add the following things (check all that apply):
More accessible play equipment more walking trails/paths more benches/shelters
More youth programs/activities What? _____
More adult programs/ activities What? _____
New, large amenity like a skatepark or dogpark

PARK FUNDING

1. Would you like Argos to invest more money in the parks?
Yes No Maybe Depends on the investment don't use parks
2. How would you like Argos to pay for new amenities in the parks?
Use existing budget municipal bonds new taxes/fees donations
Grants all of the above
3. Are you willing to pay new taxes or user fees to help pay for park improvements?

Yes maybe no depends on the improvements

4. Are you willing to pay for new park improvements with any of the following methods? (check all that apply)

Yes, small increase in program fees yes, small increase in shelter reservations

Yes, small yearly city park user tax No, can't afford to pay anything for parks

No, unwilling to pay anything for parks

**Argos Parks and Recreation Department
2015 Park Plan Development Survey**

Please complete and return to : Argos Park Board, 201 W. Walnut St., Argos, IN 46501

PARK USE

- How often do you use the Argos Parks?
Every Day ² 4 or 5 times a week ² 3 or fewer times a month ¹ once or twice a year ⁴ never ³
- How would you rate our parks?
High quality ⁵ generally good ⁶ quality varies from park to park ⁶ poor quality ⁴
- What do you typically do in the parks?
Use playgrounds ⁴ walk/jog/run ² go fishing ² relax ¹ use sports fields ¹ picnic ¹ other ⁴
- Please select the people that you most often use the park with!
Family ⁴ friends ² varies on each visit ² just myself ²

PROGRAMS AND ACTIVITIES

- What ideas do you have for programs in the park?
- What programs in the park have you attended?
July 4th-a-Bration ¹¹ Movie in the Park ¹¹ Athletic events ⁶
- Were the programs fun and well organized?
Yes ⁶ A little ⁶ no ⁶

PARTICIPATION

- Is there anything that prevents or restricts your use of the parks?
No ¹⁰ Don't use parks ¹⁰ Yes : If so, what? _____
- Do any of these physical barriers restrict or prevent your using the parks or programs?
Physical access to park/equipment ¹ lack of accessible parking ¹ park is too far away ¹
Other: _____
- What is the single most important thing that prevents you from using the parks or programs more?
Lack of time ⁸ poor health/mobility ⁸ lack of interest ⁸ other _____
- I would like to see the Argos Park Board add the following things (check all that apply):
More accessible play equipment ² more walking trails/paths ¹ more benches/shelters ²
More youth programs/activities ² What? _____
More adult programs/ activities ² What? _____
New, large amenity like a skatepark or dogpark ⁻²
Replace mulch w/ rubber playground surface; add Port-A-John at the sledding hill

PARK FUNDING

- Would you like Argos to invest more money in the parks?
Yes ⁴ No ⁴ Maybe ⁴ Depends on the investment ³ don't use parks ²
- How would you like Argos to pay for new amenities in the parks?
Use existing budget ² municipal bonds ² new taxes/fees ¹ donations ¹
Grants ³ all of the above ⁴
- Are you willing to pay new taxes or user fees to help pay for park improvements?
Yes = 3 No = 2 user fees = 1

Yes maybe no depends on the improvements

4. Are you willing to pay for new park improvements with any of the following methods? (check all that apply)

Yes, small increase in program fees **2** yes, small increase in shelter reservations **2**

Yes, small yearly city park user tax **3** No, can't afford to pay anything for parks **2**

No, unwilling to pay anything for parks



+ Create Survey

Upgrade to get meaningful results: View all your responses and get powerful analysis. View Pricing →

Argos Parks Student Survey

Summary Design Survey Collect Responses Analyze Results

CURRENT VIEW

+ FILTER + COMPARE + SHOW

No rules applied

Rules allow you to FILTER, COMPARE and SHOW results to see trends and patterns. Learn more »

SAVED VIEWS (1)

Original View (No rules applied)

+ Save as...

EXPORTS

SHARED DATA

No shared data

Sharing allows you to share your survey results with others. You can share all data, a saved view, or a single question summary. Learn more »

Share All



MAXIMUM RESPONSE LIMIT: You have reached your limit of 100 survey responses. To see all 179 responses, upgrade to any pro plan.

Upgrade

RESPONDENTS: 100 of 179

Export All

Share All

Question Summaries

Data Trends

Individual Responses

PAGE 1

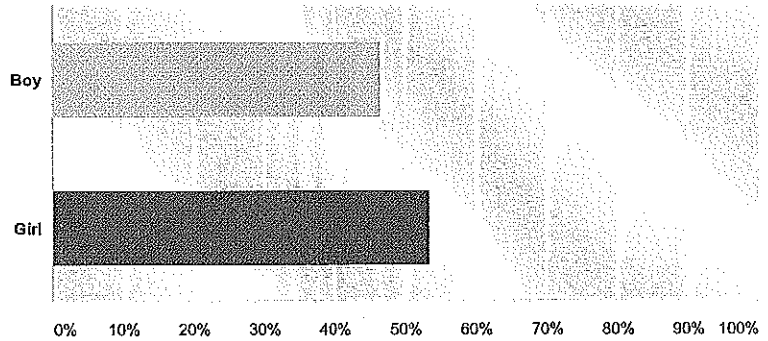
Q1

Customize

Export

Are you a boy or a girl?

Answered: 99 Skipped: 1



Answer Choices	Responses
Boy	46.46% 46
Girl	53.54% 53
Total	99

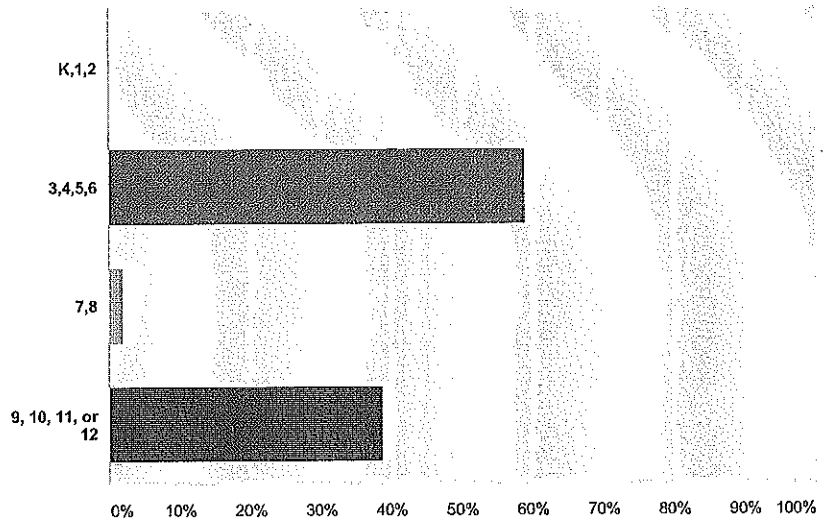
Q2

Customize

Export

What grade are you in this year?

Answered: 98 Skipped: 2



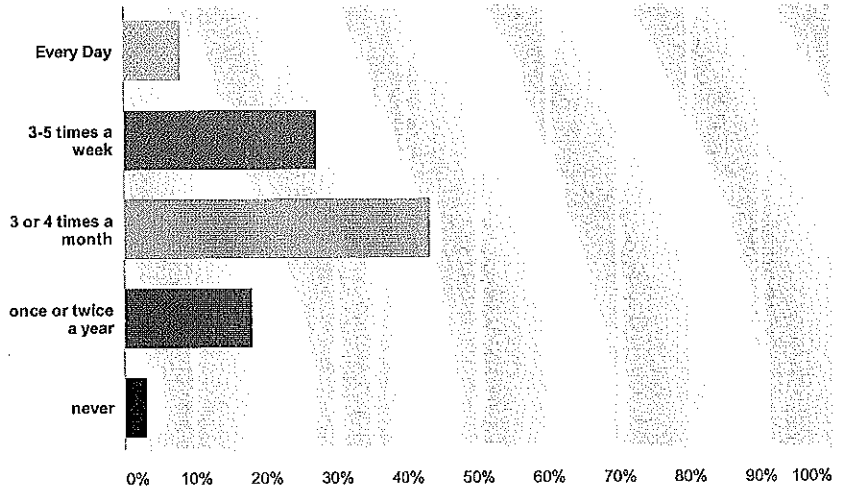
Answer Choices	Responses
▼ K,1,2	0.00% 0
▼ 3,4,5,6	59.18% 58
▼ 7,8	2.04% 2
▼ 9, 10, 11, or 12	38.78% 38
Total	98

Q3

[Customize](#) [Export](#)

How often do you use the Argos Parks?

Answered: 99 Skipped: 1



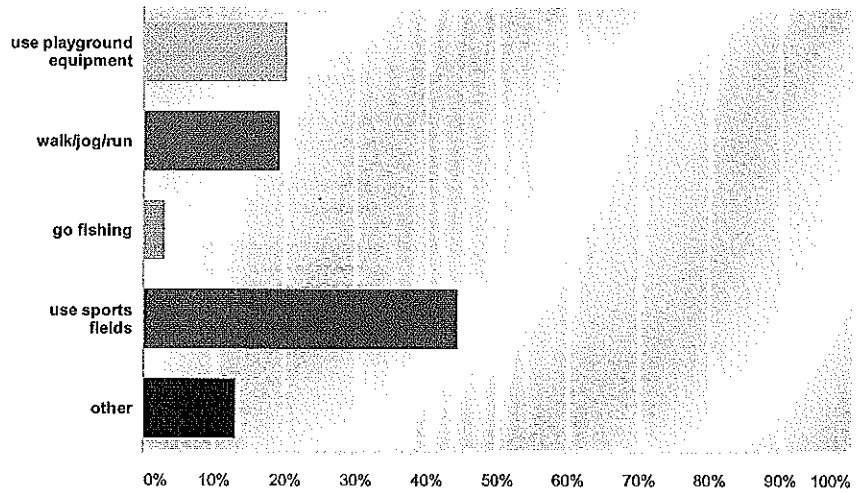
Answer Choices	Responses
▼ Every Day	8.08% 8
▼ 3-5 times a week	27.27% 27
▼ 3 or 4 times a month	43.43% 43
▼ once or twice a year	18.18% 18
▼ never	3.03% 3
Total	99

Q4

Customize Export

What do you usually do in the park?

Answered: 99 Skipped: 1



Answer Choices	Responses
use playground equipment	20.20% 20
walk/jog/run	19.19% 19
go fishing	3.03% 3
use sports fields	44.44% 44
other	13.13% 13
Total	99

Q5

Export

What ideas do you have for programs in the park?

Answered: 89 Skipped: 11

Responses (89) Text Analysis My Categories

PRO FEATURE
 Use text analysis to search and categorize responses; see frequently-used words and phrases. To use Text Analysis, upgrade to a GOLD or PLATINUM plan.

Upgrade Learn more »

Categorize as... Filter by Category Search responses

Showing 89 responses

Argos Parks -Student Survey Results

140 Surveys were completed online by students in Grades 4-12 during the month of October 2015. The students were asked what they would like to see added to the Argos Parks. The following were the suggestions that had more than one response:

<u>Activity/Addition</u>	<u>No. of Requests</u>
Pool	11
Sandlot Volleyball -	10
Volleyball -	10
Swings	9
Playground for older kids	8
Football Field	6
Large Slide	6
Basketball Court	5
Skate Park	4
Tennis Court	4
Club House	3
Archery	3
Track	2

In addition, the students had the following ideas for events/ activities they'd like to see through the Argos Parks Department:

Basketball Tourneys	Movie Nights
Parties	Santa Mail/Tree Lighting
Runs/ Races	Bake Sale
Camping programs	Community Cook-Out
Hikes	Haunted Playground
Hunting Course	Summer Sport Competitions
Exercise Program	Day Camps
Biking Program	Dances
Ice Skating	Carnival Rides
Farmer's Market	Fishing Contest
Fair	Fundraiser Walks
Community Picnics	Craft Show
Wildlife/ Nature Programs	

Argos Parks and Recreation Department
Minutes of Planning Meeting with the Park Board
Thursday, October 15, 2015
5:00 P.M.

The planning consultant, Donna Burroughs, met with the members of the Argos Parks and Recreation Board on Thursday, October 15, 2015 from 5:00 P.M.-5:30 P.M. to discuss the board's thoughts on the development of the town parks over the next five years.

Members present for the meeting were Ed Barcus, Joe Stone, Jon VanDerWeele, and Phil Dean. Nicole Stevens was absent. Also present was the Parks Supervisor, Jim Burroughs.

Those present listed the needs for the park from their viewpoint. These include:

Organizing /hosting a festival to attract people to Argos

Re-surfacing the baseball diamonds

Resealing the roads

Purchase of a new equipment truck

Re-roofing park pavilions

Organize a "Friends of the Parks" volunteer group to help with fundraising and park activities

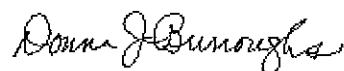
Install/build sidewalks/trails to connect all of the park grounds to one another

Add signage to guide people to the available park facilities/ activities

Develop educational activities to feature the park and wetlands areas

Those present also were supportive of the park, town, and school boards working together to maximize the use of tax dollars.

Respectfully submitted,



Donna Burroughs
Consultant



THURSDAY, NOVEMBER 19TH PUBLIC MEETING

New Five Year Park Plan

Plan to attend the public meeting to give input on the development of the new five year park plan for the Argos Town Parks. The public input meeting will be held on Thursday, November 19th, at 6:30 in the council meeting room at the Argos Clerk's Office Building.

Surveys for input are also available online and in the town clerk's office.

NEW Park Plan Survey for Argos Town Parks

**The Public is
invited to give
their input on a
survey.**

**Completed
surveys should be
returned to the
Town Clerk's
office.**

**Public meeting to
give input on the
survey is November
19th at 6:30 PM at the
town building,
council meeting
room.**

ARGOS PARK BOARD

201 W. Walnut St.

www.townofargos.com

574-892-5717

ARGOS PARKS AND RECREATION BOARD
PUBLIC MEETING FOR COMMENTS ON FIVE YEAR PLAN
NOVEMBER 19, 2015
6:30 P.M.
MINUTES

There were four members of the Argos Community in attendance at the public meeting convened for patrons to give input on the five year parks and recreation plan. Those in attendance were: Brenda Hutchinson, Ed Barcus, Jim Burroughs, and Donna Burroughs.

Those present had a discussion until 7:30 P.M. about projects the school, town, and park boards could complete through collaboration which would save tax dollars for all three entities. Some of the suggestions were repairing the tennis courts near the school for use by all three groups and adding cost efficient lights at the softball field near the school. These are current facilities that need repairs but would be useable if updated.

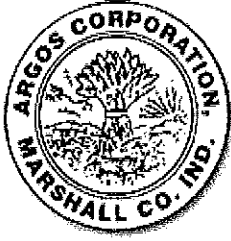
Also discussed was the idea that improved recreational facilities would make the community more attractive for businesses/industry and possibly motivate people considering a change of residence to move to Argos. The town must look at ways to market the Argos Community for the community to remain viable into the future.

The idea of connecting the multiple town park areas with trails was also met with favor by the group in attendance. Adding signage throughout the town which promoted and guided visitors to the town park attractions was also supported by the discussion group. Lastly, an enclosed building that could be rented for reunions, weddings, large group celebrations was also mentioned as an attraction to consider for the park plan.

Respectfully Submitted,



Donna Burroughs
120 Westview Ct.
Argos, IN 46501



Welcome Home

TOWN WEBSITE

Town of Argos INDIANA

[Town of Argos > Home](#)

-
- Home
 - Town Clerk
 - Town Council
 - Police
 - Fire / EMS
 - Utilities / Street
 - Committees / Boards
 - Economic Development
 - About Argos
 - Forms
 - Municipal Code
 - Activities
-

Welcome to the Town of Argos

Welcome to the Town of Argos, Indiana website. We hope to design and develop this website so that it has lots of useful information for the current and maybe even the future residents of Argos.

Argos is a small town located in north central Indiana. Conveniently located just off of US 31, we are 2 hours north of Indianapolis and 30 minutes south of South Bend, Indiana. The suburbs of Chicago can be reached in less than 2 hours.

Our school system has won numerous academic awards. We have made many improvements to the town's infrastructure so that our residents have safe, smooth roads, clean drinking water and reliable electricity. The police and fire departments take great pride in providing professional, courteous service when needed.

Local business owners provide various services for our residents. Small town values and hard working residents are just a few words that describe the people that make up the Town of Argos.

Stop by sometime and take a look... you may not want to leave.

Argos Parks Needs Your HELP!

Please take a minute and follow the link to fill out a survey

to assist the Parks Department with their 5-year plan.

<https://www.surveymonkey.com/r/3BVN7YK>

Movie Night in the Park

For information on Movie Night in the Park click the link, [Activities](#)



Like us on Facebook

Keep updated on the Town of Argos.

career.

Junior award winners

Student of the Month

Mr. Hatcher nominated Carson Pifer. Mr. Hatcher wrote,

very caring and objective. She was on task and made a big difference in class!

Perfect Attendance Award

Leah Smith was chosen out of the 57 members of the sophomore class that had perfect attendance during the month of October.

* LOCAL NEWSPAPER
ANNOUNCEMENT

Community Calendar

Listing of area events

TODAY

• Plymouth Elks Lodge will be serving Wednesday night specials from 5-8 p.m. Menu is beef and noodles, baked pork chop, and fish basket. Meal includes potato, salad, and dessert. Carryouts available by calling 574-935-5511.

• Argos American Legion Post 68, now with a new chef, will be serving glazed baked half chicken with rice pilaf and green beans as its Wednesday night special from 5-7 p.m. A variety of sandwiches will also be available. Family dining available. Open to the public. For more information, please call 574-892-6509.

THURSDAY, NOV. 19

• There will be an American Red Cross blood drive from 12:30-6 p.m., at Washington Discovery Academy, 1500 Lake Ave., Plymouth. Download the American Red Cross Blood Donor App, visit redcrossblood.org or call 1-800-RED CROSS (1-800-733-2767) to make an appointment or for more information.

• There will be an American Red Cross blood drive from

11 a.m.-4 p.m., at Ancilla College, 9601 S. Union, Donaldson. Download the American Red Cross Blood Donor App, visit redcrossblood.org or call 1-800-RED CROSS (1-800-733-2767) to make an appointment or for more information.

* • The Argos Park Board will hold a special meeting at 6:30 p.m., in the town building at 201 W. Walnut St. to hear public input on the development of the five year plan for the Argos Town Parks.

• Marshall County Plan Commission will meet at 7:30 p.m. in Room 203 of the Marshall County Building, 112 W. Jefferson St., Plymouth.

• A member of Congresswoman Jackie Walorski's staff will be holding office hours to assist constituents with casework and official business from 12-1 p.m. CST at Hamlet Town Hall, 10 S. Starke St., Hamlet.

FRIDAY, NOV. 20

• Plymouth Elks Lodge will be serving Friday night specials from 5-8 p.m. Menu is fish (all you can eat), chicken, Swiss steak, baked pork chop, and T-bone steak. Carryouts available.

• Argos American Legion Post 68, now with a new chef, will be serving spaghetti and homemade meatballs with garlic bread as its Friday night special from 5-8 p.m. A variety of appetizers and sandwiches will also be served. Family dining available. Open to the public. For more information, please call 574-892-6509.

SATURDAY, NOV. 21

• The third annual



Need a break?

Let Beacon Help.

Holiday Loans

at 5.99% APR*

For more info visit: www.beaconcu.org

Stop by - 855 North Oak Rd. • (574) 936-2150



*APR Annual Percentage Rate. All loans subject to credit review. Restrictions apply. See store for details. Beacon Credit Union is a member of the FDIC.

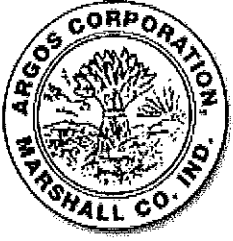


Edward R. Ruiz announces the opening of his new office. Accepting cases in Criminal Defense, Family Law, and Personal Injury. Serving Marshall, Starke, Kosciusko, St. Joseph, Fulton and all surrounding areas.

Ruiz Law, P.C.

Edward R. Ruiz, Esq.
509 Colonial Court Plymouth, IN

Telephone: 574-540-2



Welcome Home

Town of Argos INDIANA

[Town of Argos > Committees / Boards > Park Board](#)

Argos Park Board Current Board Members

Ed Barcus - President
Jon VanDerWeele
Joe Stone
Phil Dean
Nicole Stevens

[Home](#)

[Town Clerk](#)

[Town Council](#)

[Police](#)

[Fire / EMS](#)

[Utilities / Street](#)

[Committees / Boards](#)

[Economic
Development](#)

[About Argos](#)

[Forms](#)

[Municipal Code](#)

[Activities](#)



FACILITY GENERAL INFORMATION

Site code		Name of site Community Park - Town of Argos	
Address (number and street, city, state, and ZIP code) 16 th Road, Argos, IN 46501			
Primary telephone number (574) 892-5717		Primary e-mail address	Site URL
Name of owner Argos Parks and Recreation Department		Name of manager Jim Burroughs	
Type of facility: (Please check one)			
<input checked="" type="checkbox"/> Park / Recreation Area	<input type="checkbox"/> Forest	<input checked="" type="checkbox"/> Historic / Cultural Site	
<input type="checkbox"/> Dedicated Nature Preserve	<input type="checkbox"/> Reservoir	<input type="checkbox"/> Trail	
<input type="checkbox"/> Fishing / Boating Access Site	<input type="checkbox"/> Camping / Trailer Park	<input type="checkbox"/> Other _____	
<input type="checkbox"/> Pool	<input type="checkbox"/> Fish & Wildlife Area		
Type of area: (Please check one)			
<input type="checkbox"/> County	<input type="checkbox"/> Federal	<input checked="" type="checkbox"/> Municipal	
<input type="checkbox"/> Public	<input type="checkbox"/> State	<input type="checkbox"/> Township	
Time Open: <input type="checkbox"/> Seasonal <input checked="" type="checkbox"/> Year-round			
Total acres 50.84	Land acres 39.0	Water acres .84	Wetlands acres 11

PICNIC AND PLAYGROUND AREAS

Is there a Picnic Area on this site?	<input checked="" type="checkbox"/> Yes	<input type="checkbox"/> No
Is there a Playground on this site?	<input checked="" type="checkbox"/> Yes	<input type="checkbox"/> No

ATHLETIC AREAS

Site code		
Please record "Number of" each of the following:		
AMENITY	CHECK IF THIS SITE HAS AT LEAST ONE (1) OF THE FOLLOWING	MULTI-USE (check, if applicable)
Disc Golf	<input type="checkbox"/>	<input type="checkbox"/>
Dog Park	<input type="checkbox"/>	<input type="checkbox"/>
Skateboard Park	<input type="checkbox"/>	<input type="checkbox"/>
Fields		
Baseball / Softball Fields	<input checked="" type="checkbox"/> 2	<input type="checkbox"/>
Soccer Fields	<input checked="" type="checkbox"/> 2	<input type="checkbox"/>
Football Fields	<input type="checkbox"/>	<input type="checkbox"/>
Courts		
Basketball	<input checked="" type="checkbox"/> 1	<input type="checkbox"/>
Tennis	<input type="checkbox"/>	<input type="checkbox"/>
Notes: Park also has an entrance off of State Road 10 (Walnut Street)		

CAMPING OR LODGING FACILITIES

Is there a Campground on this site? Yes No

GOLF FACILITIES

Is there a Public Golf Course on this site? Yes No

SHOOTING OR ARCHERY FACILITIES

Is there a Public Shooting Range on this site? Yes No

Is there a Public Archery Range on this site? Yes No

WINTER ACTIVITIES

Is this site open for any Winter Activity use? Yes No

TRAILS

Are there any Trails located on this site? Yes No

If Yes, please contact Indiana Department of Natural Resources - Outdoor Recreation for addition to Trails Inventory.

WATER

Is there a Pool on this site? Yes No

Is there a Splash Pad, Water Park, or other Water Feature? Yes No

Is there a Pond, Lake, River, or Creek on this site with public access? Yes No

Notes:

Site of the Fourth of July Celebration for Argos.

FACILITY GENERAL INFORMATION

Site code	Name of site Pond Park		
Address (number and street, city, state, and ZIP code) 137 Pond Street, Argos, IN 46501			
Primary telephone number (574) 892-5717	Primary e-mail address electric@townofargos.com		Site URL www.townofargos.com
Name of owner Town of Argos		Name of manager Jim Burroughs	
Type of facility: (Please check one)			
<input type="checkbox"/> Park / Recreation Area	<input type="checkbox"/> Forest	<input type="checkbox"/> Historic / Cultural Site	
<input type="checkbox"/> Dedicated Nature Preserve	<input type="checkbox"/> Reservoir	<input type="checkbox"/> Trail	
<input type="checkbox"/> Fishing / Boating Access Site	<input type="checkbox"/> Camping / Trailer Park	<input type="checkbox"/> Other _____	
<input type="checkbox"/> Pool	<input checked="" type="checkbox"/> Fish & Wildlife Area		
Type of area: (Please check one)			
<input type="checkbox"/> County	<input type="checkbox"/> Federal	<input checked="" type="checkbox"/> Municipal	
<input type="checkbox"/> Public	<input type="checkbox"/> State	<input type="checkbox"/> Township	
Time Open: <input checked="" type="checkbox"/> Seasonal <input type="checkbox"/> Year-round			
Total acres 11	Land acres 5	Water acres 6	Wetlands acres 0

PICNIC AND PLAYGROUND AREAS

Is there a Picnic Area on this site?	<input checked="" type="checkbox"/> Yes	<input type="checkbox"/> No
Is there a Playground on this site?	<input type="checkbox"/> Yes	<input checked="" type="checkbox"/> No

ATHLETIC AREAS

Site code		
Please record "Number of" each of the following: <i>NONE</i>		
AMENITY	CHECK IF THIS SITE HAS AT LEAST ONE (1) OF THE FOLLOWING	MULTI-USE (check, if applicable)
Disc Golf	<input type="checkbox"/>	<input type="checkbox"/>
Dog Park	<input type="checkbox"/>	<input type="checkbox"/>
Skateboard Park	<input type="checkbox"/>	<input type="checkbox"/>
Fields		
Baseball / Softball Fields	<input type="checkbox"/>	<input type="checkbox"/>
Soccer Fields	<input type="checkbox"/>	<input type="checkbox"/>
Football Fields	<input type="checkbox"/>	<input type="checkbox"/>
Courts		
Basketball	<input type="checkbox"/>	<input type="checkbox"/>
Tennis	<input type="checkbox"/>	<input type="checkbox"/>
Notes:		

CAMPING OR LODGING FACILITIES

Is there a Campground on this site? Yes No

GOLF FACILITIES

Is there a Public Golf Course on this site? Yes No

SHOOTING OR ARCHERY FACILITIES

Is there a Public Shooting Range on this site? Yes No

Is there a Public Archery Range on this site? Yes No

WINTER ACTIVITIES

Is this site open for any Winter Activity use? Yes No

TRAILS

Are there any Trails located on this site? Yes No

If Yes, please contact Indiana Department of Natural Resources - Outdoor Recreation for addition to Trails Inventory.

WATER

Is there a Pool on this site? Yes No

Is there a Splash Pad, Water Park, or other Water Feature? Yes No

Is there a Pond, Lake, River, or Creek on this site with public access? Yes No

Notes:

FACILITY GENERAL INFORMATION

Site code		Name of site Yearick Park - Town of Argos	
Address (number and street, city, state, and ZIP code) Yearick St., Argos, IN 46501			
Primary telephone number (574) 892-5717		Primary e-mail address	Site URL
Name of owner Argos Parks and Recreation Department		Name of manager Jim Burroughs	
Type of facility: (Please check one)			
<input checked="" type="checkbox"/> Park / Recreation Area	<input type="checkbox"/> Forest	<input type="checkbox"/> Historic / Cultural Site	
<input type="checkbox"/> Dedicated Nature Preserve	<input type="checkbox"/> Reservoir	<input type="checkbox"/> Trail	
<input type="checkbox"/> Fishing / Boating Access Site	<input type="checkbox"/> Camping / Trailer Park	<input type="checkbox"/> Other _____	
<input type="checkbox"/> Pool	<input type="checkbox"/> Fish & Wildlife Area		
Type of area: (Please check one)			
<input type="checkbox"/> County	<input type="checkbox"/> Federal	<input checked="" type="checkbox"/> Municipal	
<input type="checkbox"/> Public	<input type="checkbox"/> State	<input type="checkbox"/> Township	
Time Open: <input type="checkbox"/> Seasonal <input checked="" type="checkbox"/> Year-round			
Total acres 3	Land acres 3	Water acres 0	Wetlands acres 0

PICNIC AND PLAYGROUND AREAS

Is there a Picnic Area on this site? <input type="checkbox"/> Yes <input checked="" type="checkbox"/> No	
Is there a Playground on this site? <input type="checkbox"/> Yes <input checked="" type="checkbox"/> No	

ATHLETIC AREAS

Site code		
Please record "Number of" each of the following:		
AMENITY	CHECK IF THIS SITE HAS AT LEAST ONE (1) OF THE FOLLOWING	MULTI-USE (check, if applicable)
Disc Golf	<input type="checkbox"/>	<input type="checkbox"/>
Dog Park	<input type="checkbox"/>	<input type="checkbox"/>
Skateboard Park	<input type="checkbox"/>	<input type="checkbox"/>
Fields		
Baseball / Softball Fields	<input checked="" type="checkbox"/> 1	<input type="checkbox"/>
Soccer Fields	<input type="checkbox"/>	<input type="checkbox"/>
Football Fields	<input type="checkbox"/>	<input type="checkbox"/>
Courts		
Basketball	<input type="checkbox"/>	<input type="checkbox"/>
Tennis	<input type="checkbox"/>	<input type="checkbox"/>
Notes: This softball field is used by the community leagues and the school team.)		

CAMPING OR LODGING FACILITIES

Is there a Campground on this site? Yes No

GOLF FACILITIES

Is there a Public Golf Course on this site? Yes No

SHOOTING OR ARCHERY FACILITIES

Is there a Public Shooting Range on this site? Yes No

Is there a Public Archery Range on this site? Yes No

WINTER ACTIVITIES

Is this site open for any Winter Activity use? Yes No

TRAILS

Are there any Trails located on this site? Yes No

If Yes, please contact Indiana Department of Natural Resources - Outdoor Recreation for addition to Trails Inventory.

WATER

Is there a Pool on this site? Yes No

Is there a Splash Pad, Water Park, or other Water Feature? Yes No

Is there a Pond, Lake, River, or Creek on this site with public access? Yes No

Notes:

Used by Argos Schools, too..

FACILITY GENERAL INFORMATION

Site code		Name of site Memorial Park - Town of Argos	
Address (number and street, city, state, and ZIP code) South Michigan Street, Argos, IN 46501			
Primary telephone number (574) 892-5717		Primary e-mail address	Site URL
Name of owner Argos Parks and Recreation Department		Name of manager Jim Burroughs	
Type of facility: (Please check one)			
<input checked="" type="checkbox"/> Park / Recreation Area	<input type="checkbox"/> Forest	<input checked="" type="checkbox"/> Historic / Cultural Site	
<input type="checkbox"/> Dedicated Nature Preserve	<input type="checkbox"/> Reservoir	<input type="checkbox"/> Trail	
<input type="checkbox"/> Fishing / Boating Access Site	<input type="checkbox"/> Camping / Trailer Park	<input type="checkbox"/> Other _____	
<input type="checkbox"/> Pool	<input type="checkbox"/> Fish & Wildlife Area		
Type of area: (Please check one)			
<input type="checkbox"/> County	<input type="checkbox"/> Federal	<input type="checkbox"/> Municipal	
<input checked="" type="checkbox"/> Public	<input type="checkbox"/> State	<input type="checkbox"/> Township	
Time Open: <input type="checkbox"/> Seasonal <input checked="" type="checkbox"/> Year-round			
Total acres /, 5	Land acres/, 5	Water acres 0	Wetlands acres 0

PICNIC AND PLAYGROUND AREAS

Is there a Picnic Area on this site? <input checked="" type="checkbox"/> Yes <input type="checkbox"/> No	
Is there a Playground on this site? <input checked="" type="checkbox"/> Yes <input type="checkbox"/> No	

ATHLETIC AREAS

Site code		
Please record "Number of" each of the following: <i>NONE</i>		
AMENITY	CHECK IF THIS SITE HAS AT LEAST ONE (1) OF THE FOLLOWING	MULTI-USE <i>(check, if applicable)</i>
Disc Golf	<input type="checkbox"/>	<input type="checkbox"/>
Dog Park	<input type="checkbox"/>	<input type="checkbox"/>
Skateboard Park	<input type="checkbox"/>	<input type="checkbox"/>
Fields		
Baseball / Softball Fields	<input type="checkbox"/>	<input type="checkbox"/>
Soccer Fields	<input type="checkbox"/>	<input type="checkbox"/>
Football Fields	<input type="checkbox"/>	<input type="checkbox"/>
Courts		
Basketball	<input type="checkbox"/>	<input type="checkbox"/>
Tennis	<input type="checkbox"/>	<input type="checkbox"/>
Notes: old graveyard site back to graves from the Civil War and a relative of Johnny Appleseed		

CAMPING OR LODGING FACILITIES

Is there a Campground on this site? Yes No

GOLF FACILITIES

Is there a Public Golf Course on this site? Yes No

SHOOTING OR ARCHERY FACILITIES

Is there a Public Shooting Range on this site? Yes No

Is there a Public Archery Range on this site? Yes No

WINTER ACTIVITIES

Is this site open for any Winter Activity use? Yes No

TRAILS

Are there any Trails located on this site? Yes No

If Yes, please contact Indiana Department of Natural Resources - Outdoor Recreation for addition to Trails Inventory.

WATER

Is there a Pool on this site? Yes No

Is there a Splash Pad, Water Park, or other Water Feature? Yes No

Is there a Pond, Lake, River, or Creek on this site with public access? Yes No

Notes:

Site of the Argos Memorial Day observance each year.

Community Facts - Find popular facts (population, income, etc.) and frequently requested data about your community.

Enter a state, county, city, town, or zip code: [GO](#)

- [Population](#)
- [Age](#)
- [Business and Industry](#)
- [Education](#)
- [Governments](#)
- [Housing](#)
- [Income](#)
- [Origins and Language](#)
- [Poverty](#)
- [Race and Hispanic Origin](#)
- [Veterans](#)
- [Show All](#)

46501

[Bookmark/Save](#) [Print](#)

Description	Measura	Source
Population		
Census 2010 Total Population	3,856	2010 Demographic Profile
2014 Population Estimate (as of July 1, 2014)	N/A	2014 Population Estimates
2014 ACS 5-Year Population Estimate	3,740	2010-2014 American Community Survey 5-Year Estimates
Median Age	35.0	2010-2014 American Community Survey 5-Year Estimates
Number of Companies	N/A	2007 Survey of Business Owners
Educational Attainment: Percent high school graduate or higher	87.5%	2010-2014 American Community Survey 5-Year Estimates
Count of Governments	N/A	2012 Census of Governments
Total housing units	1,514	2010-2014 American Community Survey 5-Year Estimates
Median Household Income	47,382	2010-2014 American Community Survey 5-Year Estimates
Foreign Born Population	28	2010-2014 American Community Survey 5-Year Estimates
Individuals below poverty level	14.5%	2010-2014 American Community Survey 5-Year Estimates
Race and Hispanic Origin		
White alone	3,711	2010-2014 American Community Survey 5-Year Estimates
Black or African American alone	0	2010-2014 American Community Survey 5-Year Estimates
American Indian and Alaska Native alone	0	2010-2014 American Community Survey 5-Year Estimates
Asian alone	2	2010-2014 American Community Survey 5-Year Estimates
Native Hawaiian and Other Pacific Islander alone	0	2010-2014 American Community Survey 5-Year Estimates
Some Other Race alone	11	2010-2014 American Community Survey 5-Year Estimates
Two or More Races	16	2010-2014 American Community Survey 5-Year Estimates
Hispanic or Latino (of any race)	49	2010-2014 American Community Survey 5-Year Estimates
White alone, Not Hispanic or Latino	3,673	2010-2014 American Community Survey 5-Year Estimates
Veterans	206	2010-2014 American Community Survey 5-Year Estimates

♦ Want more? Need help? Use [Guided Search](#) or visit [Census.gov's Quick Facts](#).

NOTE: For information on confidentiality protection, nonsampling error, and definitions, see <http://www.census.gov/prod/cen2010/doc/sf1.pdf>.

Versions of this table are available for the following years:
2010
2000

Geography: **ZCTA5 46501**

Age	Number			Percent			Males per 100 females
	Both sexes	Male	Female	Both sexes	Male	Female	
Total population	3,856	1,929	1,927	100.0	100.0	100.0	100.1
Under 5 years	318	153	165	8.2	7.9	8.6	92.7
5 to 9 years	312	156	156	8.1	8.1	8.1	100.0
10 to 14 years	299	164	135	7.8	8.5	7.0	121.5
15 to 19 years	248	121	127	6.4	6.3	6.6	95.3
20 to 24 years	208	94	114	5.4	4.9	5.9	82.5
25 to 29 years	246	130	116	6.4	6.7	6.0	112.1
30 to 34 years	259	119	140	6.7	6.2	7.3	85.0
35 to 39 years	255	132	123	6.6	6.8	6.4	107.3
40 to 44 years	231	122	109	6.0	6.3	5.7	111.9
45 to 49 years	277	138	139	7.2	7.2	7.2	99.3
50 to 54 years	266	131	135	6.9	6.8	7.0	97.0
55 to 59 years	236	120	116	6.1	6.2	6.0	103.4
60 to 64 years	201	111	90	5.2	5.8	4.7	123.3
65 to 69 years	181	98	83	4.7	5.1	4.3	118.1
70 to 74 years	118	57	61	3.1	3.0	3.2	93.4
75 to 79 years	95	40	55	2.5	2.1	2.9	72.7
80 to 84 years	60	28	32	1.6	1.5	1.7	87.5
85 to 89 years	26	8	18	0.7	0.4	0.9	44.4
90 years and over	20	7	13	0.5	0.4	0.7	53.8
Under 18 years	1,081	544	537	28.0	28.2	27.9	101.3
18 to 64 years	2,275	1,147	1,128	59.0	59.5	58.5	101.7
18 to 24 years	304	144	160	7.9	7.5	8.3	90.0
25 to 44 years	991	503	488	25.7	26.1	25.3	103.1
25 to 34 years	505	249	256	13.1	12.9	13.3	97.3
35 to 44 years	486	254	232	12.6	13.2	12.0	109.5
45 to 64 years	980	500	480	25.4	25.9	24.9	104.2
45 to 54 years	543	269	274	14.1	13.9	14.2	98.2
55 to 64 years	437	231	206	11.3	12.0	10.7	112.1
65 years and over	500	238	262	13.0	12.3	13.6	90.8
65 to 74 years	299	155	144	7.8	8.0	7.5	107.6
75 to 84 years	155	68	87	4.0	3.5	4.5	78.2
85 years and over	46	15	31	1.2	0.8	1.6	48.4
16 years and over	2,881	1,442	1,439	74.7	74.8	74.7	100.2
18 years and over	2,775	1,385	1,390	72.0	71.8	72.1	99.6
21 years and over	2,644	1,316	1,328	68.6	68.2	68.9	99.1
60 years and over	701	349	352	18.2	18.1	18.3	99.1
62 years and over	598	293	305	15.5	15.2	15.8	96.1
67 years and over	430	196	234	11.2	10.2	12.1	83.8
75 years and over	201	83	118	5.2	4.3	6.1	70.3
Median age (years)	35.8	36.3	35.4	(X)	(X)	(X)	(X)

X Not applicable.

Source: U.S. Census Bureau, 2010 Census.

Summary File 1, Tables P12, P13, and PCT12.

Profile of General Population and Housing Characteristics: 2010
2010 Demographic Profile Data

NOTE: For more information on confidentiality protection, nonsampling error, and definitions, see <http://www.census.gov/prod/cen2010/doc/dpsf.pdf>.

Geography: Argos town, Indiana

	Subject	Number	Percent
1	SEX AND AGE		
186	Total population	1,691	100.0
186	Under 5 years	159	9.4
	5 to 9 years	138	8.2
	10 to 14 years	123	7.3
	15 to 19 years	102	6.0
	20 to 24 years	115	6.8
	25 to 29 years	130	7.7
	30 to 34 years	120	7.1
	35 to 39 years	115	6.8
	40 to 44 years	85	5.0
	45 to 49 years	107	6.3
	50 to 54 years	112	6.6
	55 to 59 years	100	5.9
	60 to 64 years	82	4.8
	65 to 69 years	73	4.3
	70 to 74 years	47	2.8
	75 to 79 years	38	2.1
	80 to 84 years	23	1.4
	85 years and over	24	1.4
	Median age (years)	33.1	(X)
	16 years and over	1,248	73.8
	18 years and over	1,211	71.6
	21 years and over	1,156	68.4
	62 years and over	251	14.8
	65 years and over	203	12.0
	Male population	849	50.2
	Under 5 years	68	4.0
	5 to 9 years	75	4.4
	10 to 14 years	74	4.4
	15 to 19 years	57	3.4
	20 to 24 years	48	2.8
	25 to 29 years	70	4.1
	30 to 34 years	50	3.0
	35 to 39 years	56	3.3
	40 to 44 years	48	2.8
	45 to 49 years	56	3.3
	50 to 54 years	56	3.3
	55 to 59 years	53	3.1
	60 to 64 years	46	2.7
	65 to 69 years	39	2.3
	70 to 74 years	22	1.3
	75 to 79 years	13	0.8
	80 to 84 years	10	0.6
	85 years and over	8	0.5
	Median age (years)	32.9	(X)
	16 years and over	621	36.7
	18 years and over	599	35.4
	21 years and over	567	33.5
	62 years and over	116	6.9
	65 years and over	92	5.4
	Female population	842	49.8
	Under 5 years	91	5.4
	5 to 9 years	63	3.7
	10 to 14 years	49	2.9
	15 to 19 years	45	2.7
	20 to 24 years	67	4.0
	25 to 29 years	60	3.5
	30 to 34 years	70	4.1
	35 to 39 years	59	3.5
	40 to 44 years	37	2.2
	45 to 49 years	51	3.0
	50 to 54 years	56	3.3
	55 to 59 years	47	2.8
	60 to 64 years	36	2.1
	65 to 69 years	34	2.0
	70 to 74 years	25	1.5
	75 to 79 years	23	1.4
	80 to 84 years	13	0.8
	85 years and over	16	0.9
	Median age (years)	33.2	(X)
	16 years and over	627	37.1
	18 years and over	612	36.2

Family Households (Persons) [1]	773	93.3
With own children under 18 years	214	33.3
Husband-wife family	298	46.4
With own children under 18 years	119	18.5
Male householder, no wife present	34	5.3
With own children under 18 years	20	3.1
Female householder, no husband present	111	17.3
With own children under 18 years	75	11.7
Nonfamily households [7]	199	31.0
Householder living alone	162	25.2
Male	91	14.2
65 years and over	25	3.9
Female	71	11.1
65 years and over	42	6.5
Households with individuals under 18 years	238	37.1
Households with individuals 65 years and over	161	23.5
Average household size	2.63	(X)
Average family size [7]	3.08	(X)
HOUSING OCCUPANCY		
Total housing units	724	100.0
Occupied housing units	642	88.7
Vacant housing units	82	11.3
For rent	34	4.7
Rented, not occupied	0	0.0
For sale only	18	2.5
Sold, not occupied	1	0.1
For seasonal, recreational, or occasional use	4	0.6
All other vacants	25	3.5
Homeowner vacancy rate (percent) [8]	4.0	(X)
Rental vacancy rate (percent) [9]	14.2	(X)
HOUSING TENURE		
Occupied housing units	642	100.0
Owner-occupied housing units	436	67.9
Population in owner-occupied housing units	1,147	(X)
Average household size of owner-occupied units	2.63	(X)
Renter-occupied housing units	206	32.1
Population in renter-occupied housing units	544	(X)
Average household size of renter-occupied units	2.64	(X)

X Not applicable.

[1] Other Asian alone, or two or more Asian categories.

[2] Other Pacific Islander alone, or two or more Native Hawaiian and Other Pacific Islander categories.

[3] One of the four most commonly reported multiple-race combinations nationwide in Census 2000.

[4] In combination with one or more of the other races listed. The six numbers may add to more than the total population, and the six percentages may add to more than 100 percent because individuals may report more than one race.

[5] This category is composed of people whose origins are from the Dominican Republic, Spain, and Spanish-speaking Central or South American countries. It also includes general origin responses such as "Latino" or "Hispanic."

[6] "Spouse" represents spouse of the householder. It does not reflect all spouses in a household. Responses of "same-sex spouse" were edited during processing to "unmarried partner."

[7] "Family households" consist of a householder and one or more other people related to the householder by birth, marriage, or adoption. They do not include same-sex married couples even if the marriage was performed in a state issuing marriage certificates for same-sex couples. Same-sex couple households are included in the family households category if there is at least one additional person related to the householder by birth or adoption. Same-sex couple households with no relatives of the householder present are tabulated in nonfamily households. "Nonfamily households" consist of people living alone and households which do not have any members related to the householder.

[8] The homeowner vacancy rate is the proportion of the homeowner inventory that is vacant "for sale." It is computed by dividing the total number of vacant units "for sale only" by the sum of owner-occupied units, vacant units that are "for sale only," and vacant units that have been sold but not yet occupied; and then multiplying by 100.

[9] The rental vacancy rate is the proportion of the rental inventory that is vacant "for rent." It is computed by dividing the total number of vacant units "for rent" by the sum of the renter-occupied units, vacant units that are "for rent," and vacant units that have been rented but not yet occupied; and then multiplying by 100.

Source: U.S. Census Bureau, 2010 Census.